

PANEL FABRIC

FR 701®  
STYLE 2100

# 2003 Some Colors Available on Eagle-Noise Reduction Panels



**538** SILVER PAPIER



**130** WHEAT



**460** BUFF



**748** BONE



**394** OPAL



**481** PEARL



**404** APRICOT NEUTRAL



**747** STRAW



**238** GREY MIX



**758** DESERT SAND



**751** TERRA



**403** VANILLA NEUTRAL



**298** MEDIUM GREY



**750** CEMENT MIX



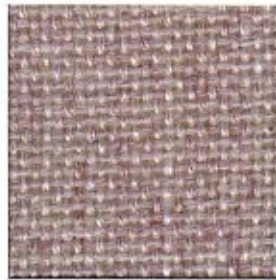
**422** CINNABAR



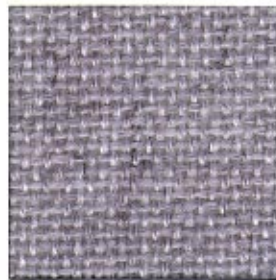
**423** PUMICE



**380** QUARTZ



**406** SILVER NEUTRAL



**539** BLEU PAPIER



**749** DUNE



**400** CHERRY NEUTRAL



**405** LAVENDER NEUTRAL



**401** BLUE NEUTRAL



**757** STREAM



**390** ROSE QUARTZ



**752** LILAC



**175** CRYSTAL BLUE



**755** LEAF



**475** SIENNA



**753** VIOLET



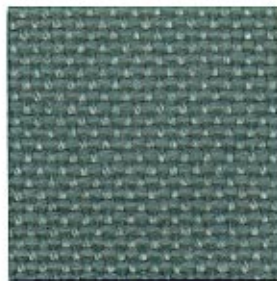
**150** WEDGEWOOD



**754** LIGHT MOSS



**468** EUCALYPTUS



**549** CHROME GREEN



**486** BAYBERRY



**545** BRONZE



**561** VERTE PAPIER



**381** AQUAMARINE



**424** AMETHYST



**556** DEEP BURGUNDY



**402** GREEN NEUTRAL



**756** LAKE



**153** BALTIC



**418** CLARET ACCENT



**467** BLUE SPRUCE



**470** ULTRAMARINE



**553** BLUE PLUM



**408** BLACK

# SPECIFICATIONS

## FR 701®

---

PATTERN	2100
CONTENTS	100% Terratex™ Polyester
WEIGHT	16.0 ± 0.5 Oz./Lin. Yd.
WIDTH	66" Useable
REPEAT	None

## CLEANING CODE

---

S-W	Fabric may be cleaned with mild, water-free solvents or water-based cleaning agents or foam.
-----	--

## PERFORMANCE

---

TENSILE (ASTM D 5034)	150 Lbs. Min. - Warp and Fill
TEAR (ASTM D 2261)	30 Lbs. Min. - Warp and Fill
MOISTURE REGAIN (ASTM D 2654)	0.5% Max.
COLORFASTNESS TO LIGHT (AATCC 16E) -	40 Hrs.
COLORFASTNESS TO CROCKING (AATCC 8)	Class 4 Min. - Dry, Class 4 Min. - Wet

## FLAMMABILITY

---

ASTM E-84	Class 1 or A
NFPA-701 LARGE SCALE - 1989	Passes
STATE OF CA. TECH. BULLETIN 117 SEC. E (CS-191-53)	Passes

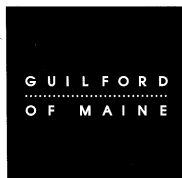
TERRATEX™ IS A REGISTERED TRADEMARK OF INTERFACE INTERIOR FABRICS, INC. AND DESIGNATES FABRICS THAT ARE PRODUCED WITH 100% RECYCLED CONTENT AS WELL AS INCREASINGLY SUSTAINABLE MANUFACTURING PRACTICES.

 FR701® IS INCLUDED IN THE UNDERWRITERS LABORATORY PANEL FABRIC RECOGNITION PROGRAM. ADDITIONAL TESTING OF THIS U.L. RECOGNIZED COMPONENT FABRIC IS NOT REQUIRED ON APPROVED PANELS FROM PARTICIPATING MANUFACTURERS.

COLORS MAY VARY SLIGHTLY BETWEEN DYE LOTS.

APPLICATION TESTING OF THIS PRODUCT IS RECOMMENDED.

FR701® IS A REGISTERED TRADEMARK OF GUILFORD OF MAINE.



GUILFORD OF MAINE  
5300 CORPORATE GROVE DR. SE  
SUITE 200  
GRAND RAPIDS, MI 49512-5512  
1 800 544 0200 FAX / 616 554 2255

GUILFORD OF MAINE (CANADA), INC.  
254 ST-URBAIN  
GRANBY, QUEBEC J2G 8M8  
CANADA  
514 777 3411 FAX / 514 777 3413

AN INTERFACE COMPANY

