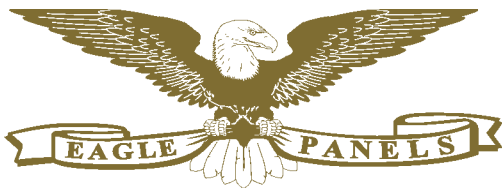


# EAGLE PANELS

*An Advance Company*  
*Industrial Noise Abatement • Engineered Thermal Products*



find out more information at  
[www.eaglepanels.com](http://www.eaglepanels.com)  
or  
e-mail [info@eaglepanels.com](mailto:info@eaglepanels.com)

***THERMAL PANELS***  
***ACOUSTICAL PANELS***  
***STRUCTURAL PANELS***  
***INSULATED PANELS***

Wherever sturdy, rigid, insulated **load bearing** panels are required or can be utilized, EAGLE panels should be carefully considered for their multiple advantages and low cost.

EAGLE's modular panel design provides the highest degree of flexibility for horizontal or vertical installation. The panels can be readily adapted to form enclosures of all shapes and sizes. In addition, the panels can be floor, ceiling or roof mounted and weatherproofed for exterior installation.

Available in a variety of sizes, thicknesses, styles, construction designs and materials...

for the construction of:

- Drying Rooms
- Controlled Environment Chambers
- Refrigeration Enclosures
- Industrial Ovens
- Other Insulated Structural Applications

Special Panels

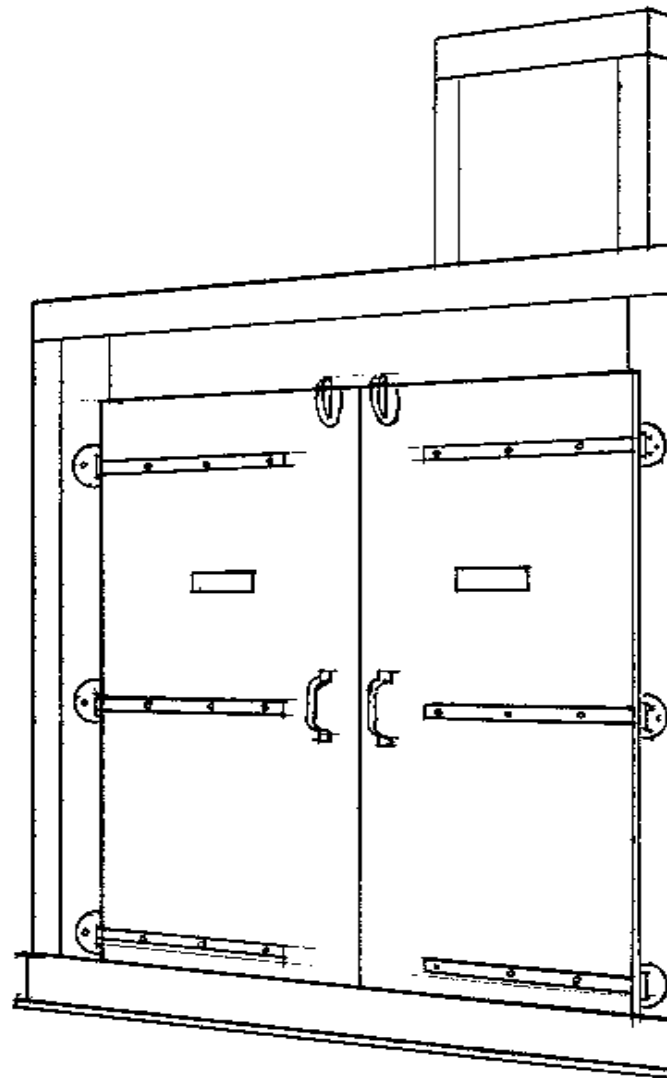
Corner Panels and Lintel Panels:

EAGLE offers two types of corner panels: standard and reinforced. The standard corner panel duplicates our flat standard panel but is made with a 90° corner and special adjustable edges. The reinforced corner panel is constructed in a manner similar to the standard corner but is reinforced internally to permit door mounting.

**Odd shapes and openings are made to special order. Please indicate your requirements.**

# Thermal Pa

a modular T&G system with providing excellent

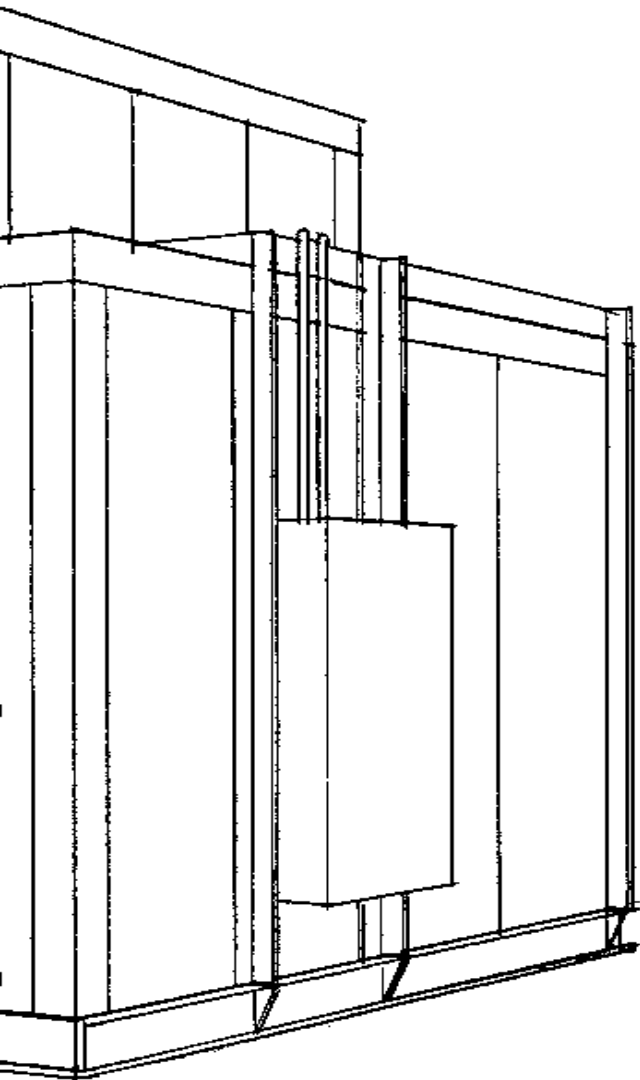


THICKNESS	MAXIMUM TEMP.	OV V
3"	425° F	2
4"	525° F	2
5"	650° F	2
6"	750° F	2

**SPECIAL SIZES MADE TO ORDER AND OTHER WIDTHS OF 34", 40", 46" AND**

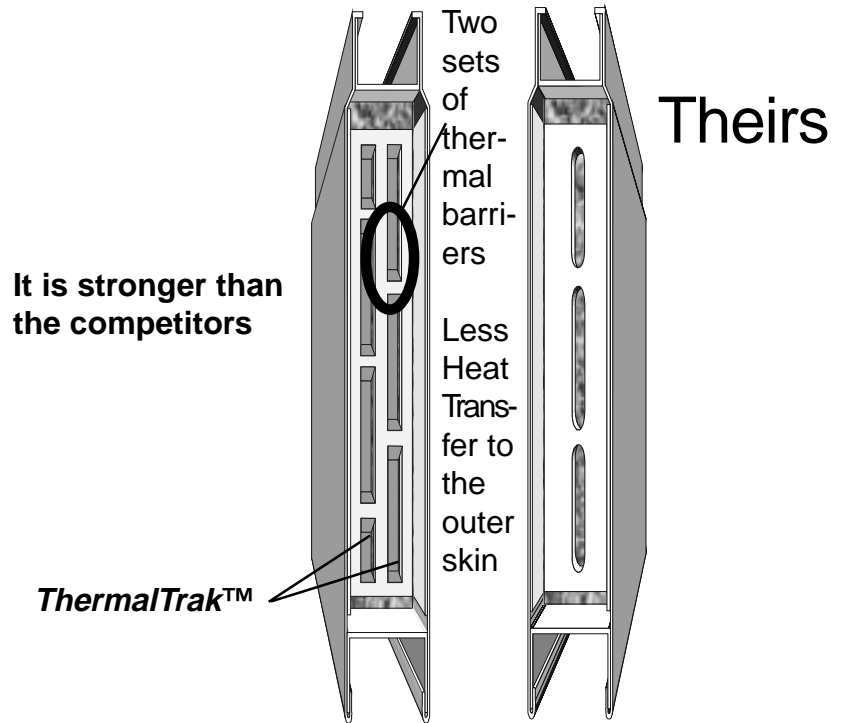
# Panel System

exclusive ThermalTrak™ panels  
thermal characteristics



## The Panel

Perimeter channels slotted to reduce heat or cold transfer through panel edges WITH OUR PATENTED ThermalTrak™ SYSTEM



## your choice?

All panel surfaces and edge channels are precision roll formed, thereby producing panels which are accurate in both design and dimension. This, in turn, ensures a rapid, trouble-free installation.

EAGLE panels can be fabricated of materials which include cold rolled, stainless or aluminized steel, or any material to suit the customer's material specifications. Gauges of materials, as well as construction of the panels, can be varied to suit end use requirements. Insulation can consist of mineral fiber, fiberglass, styrofoam, foam glass or material of customer's choice. Exterior finishes are also optional and variable. EAGLE panels are self-supporting and require a minimum of additional framework.

OVERALL WIDTH	STANDARD PITCH/WIDTH	LENGTH
4"	22"	UP' to 40'
4"	22"	UP' to 40'
4"	22"	UP' to 40'
4"	22"	UP' to 40'

AND PANEL CONSTRUCTION UP TO 1250° F  
ANY OTHER WIDTH ALSO AVAILABLE

# NoiseControl

**RP-a modular system with exclusive lift-out panel units**  
**TG-a modular system with**

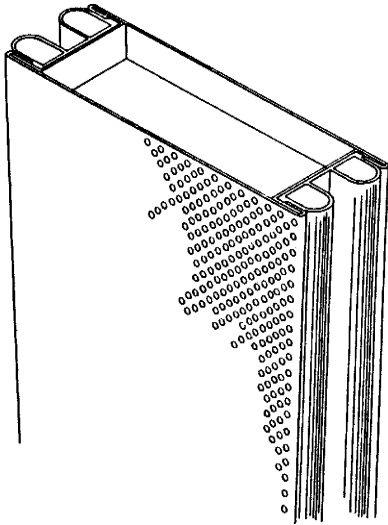
## The System.



Modular side panels, acoustical air ducts, and door assemblies are supported from a rigid steel framework. This unique design offers superior noise containment and immediate access to any part of your equipment. Simply lift out any or all panels. There are no clips, bolts or other fastening devices to hinder accessibility. The modular design allows ready interchange or replacement of panel, door, and duct units.



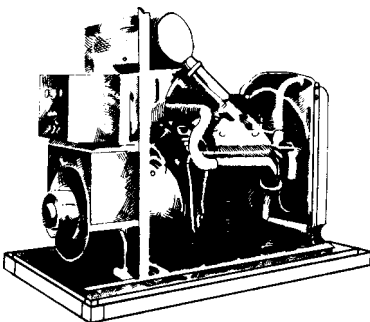
## The Panel.



All panel components are precision formed for consistent dimensional control. Outer panel face is 20 ga. steel and up to 16ga. optional while inner panel face is 22 ga. perforated steel such as 3/32" diameter holes on 5/32" staggered centers. Both panel faces are formed from hot-dipped or aluminized steel for years of trouble-free service. Paint finish available. Acoustic fill is a non-flammable mineral substance of 4-pound density. Panel thickness of 2", 3", and 4" are available. Double bulb flexible neoprene gasketing located in the center portion of each panel edge insures a positive seal between panels. Where extreme low frequency sound attenuation is required, an additional septum material is added to the interior of the panel. All acoustic fill is wrapped in 2 mil. plastic. The acoustic fill can be spaced away from the perforated panel face with a wire type mesh.

Doors are usually 16 ga. construction and are flush or double seal designs with or without thresholds. Cam lift doors & magnetic seals are available. Windows are glazed with safety plate or polycarbonate.

## The Space Saved.



Patented removable panels permit the enclosure to be installed very near machines. No inside walk-around service space is required.

# Panel System

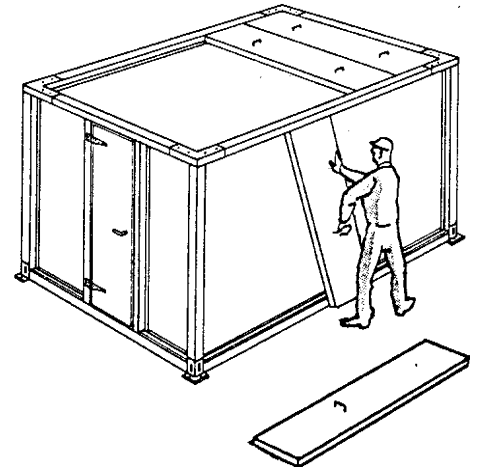
providing instant access to any part of your equipment.  
interlocking panel units providing structural integrity.

## The Installation



Enclosure erection is quick and easy. Simply lay floor channel in place. Add corner posts. Bolt top support rail to corner posts. Level enclosure by adjusting base of corner posts. Set panel and door units. Lay roof panels in place.

- The Entire Enclosure Is Portable and can easily be relocated at any time.
- No fastenings are needed for assembly other than bolting top support rails to posts.
- 100% salvageable panel and door units can be interchanged, added, or eliminated at any time. The enclosure can be extended or reduced in length or width to suit any change in equipment. The patented design of the removable non-combustible panels facilitates easy cleaning. NOTE: All noise enclosures require regular cleaning to prevent potentially hazardous accumulation of oil and dust.



These panel systems were developed by and tested by Gordon J. Pollock and are produced to the exact specifications of the patent.

Self contained ventilation panels are also available.

## The Performance

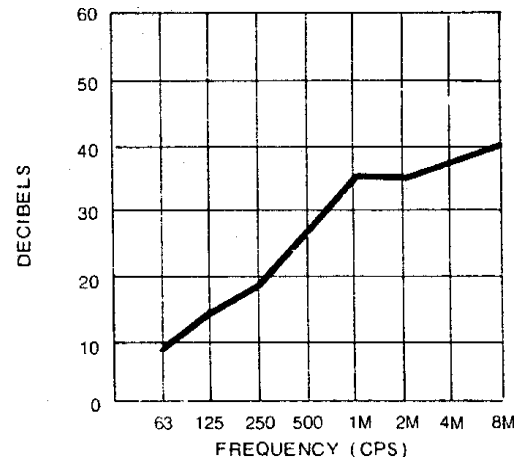


FIGURE 1

The enclosure has been tested at the Geiger & Hamme Acoustical Laboratories, Ann Arbor, Michigan. A complete enclosure 7'-0" high by 6'-8" wide and 6'-8" long, including a vision panel and a single door, was tested in accordance with ASTM E-90-61 T procedure. The resulting transmission loss is shown in Fig. 1. During the tests, panels were removed and re-installed to account for operating conditions where panels are removed to service machinery.

*Systems are also made with our T & G panels shown in the previous section...our most popular style.*

# Installation

a modular system with exclusiv

*The following is a brief description of the erection procedure for the EAGLE panel system. Complete instructions are provided with each project.*

## Preparation of Installation Area

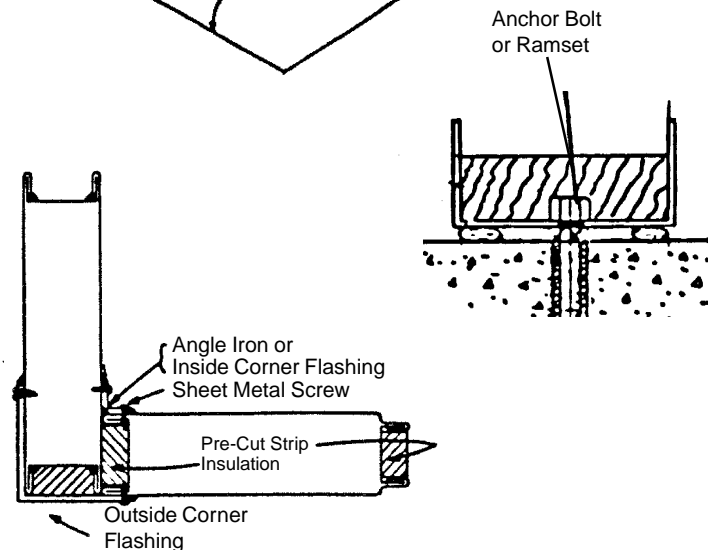
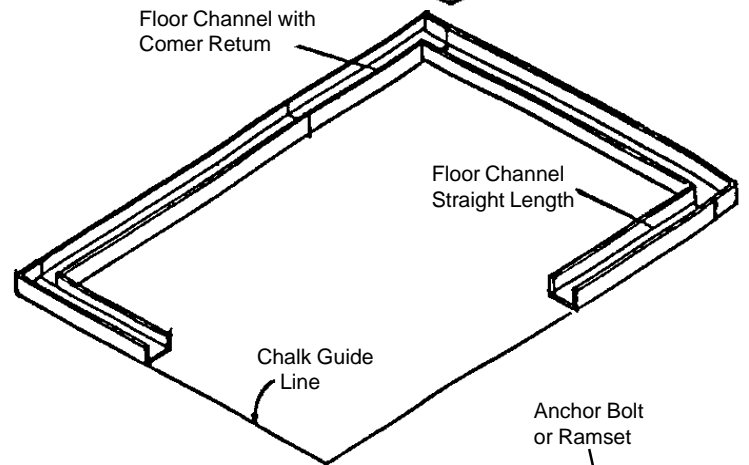
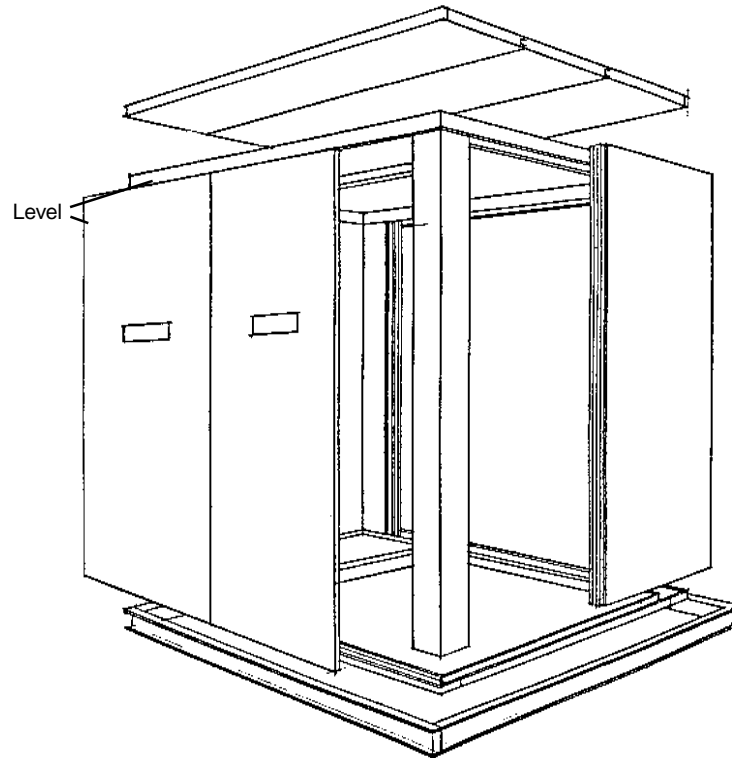
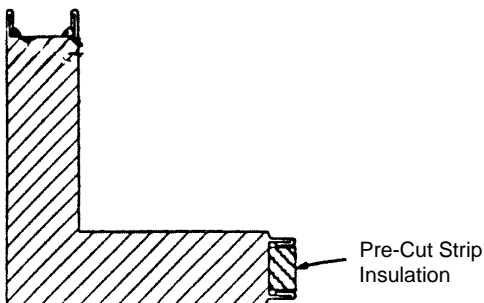
- ① Area should be clean and free of any material that might interfere with construction.
- ② Check floor for flatness. If area where floor channel will be placed is not level (in excess of  $\frac{1}{4}$ " ), build up low spots with grouting. If oven is to be erected on a curb, check curb dimensions with oven drawing and correct any irregularities.
- ③ Top face of curb should be a minimum of  $\frac{1}{2}$ " wider than the thickness of the panel to be installed. If the curb is too narrow, add to its width.

## Floor Channel Installation

- ① Lay out oven perimeter dimensions on floor or curb and snap chalk-lines for entire perimeter. Be sure all corners are square ( $90^\circ$ ).
- ② Apply continuous bead of caulk at both bottom edges; then set the floor channel in place and anchor.
- ③ Before setting panels in place fill floor channel with strip insulation.

## Corner Installation

EAGLE oven construction provides the option of furnishing corner panels or built-up corners utilizing corner flashing.



# Instructions

ve lift-out or T & G panel units.

## Wall Panel Installation

First, fill vertical edges of panels with strip insulation. Next, set corner panels in place, making sure that the panels are plumb, and secure with a temporary brace.

## Wall Panel Installation (continued):

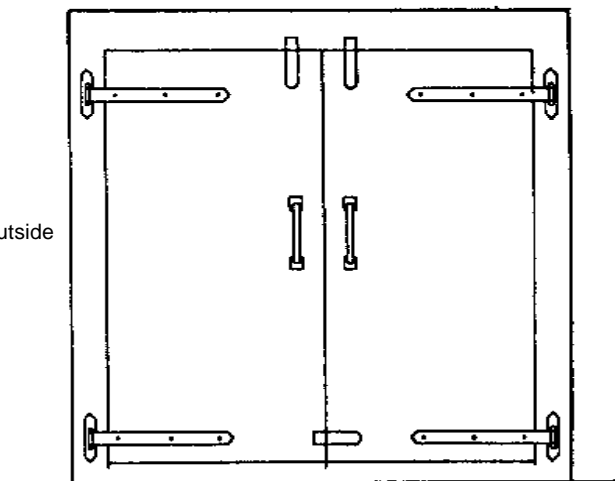
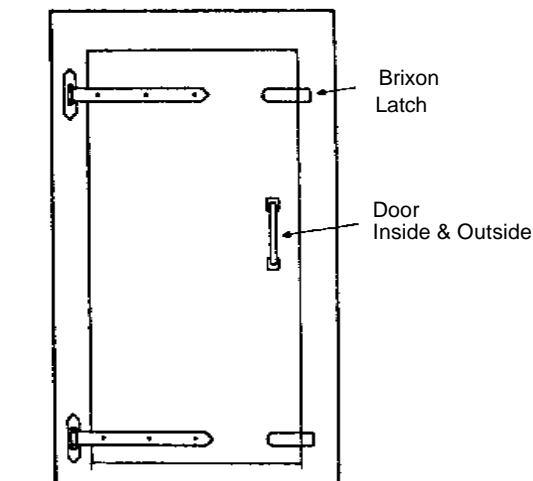
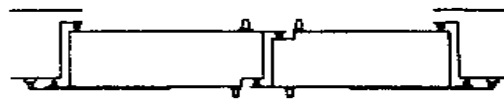
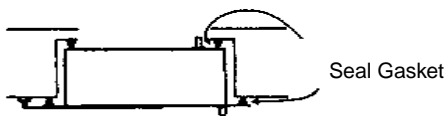
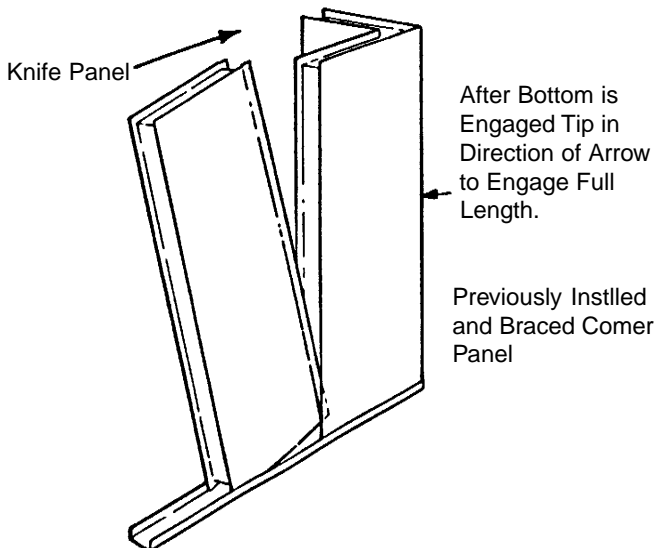
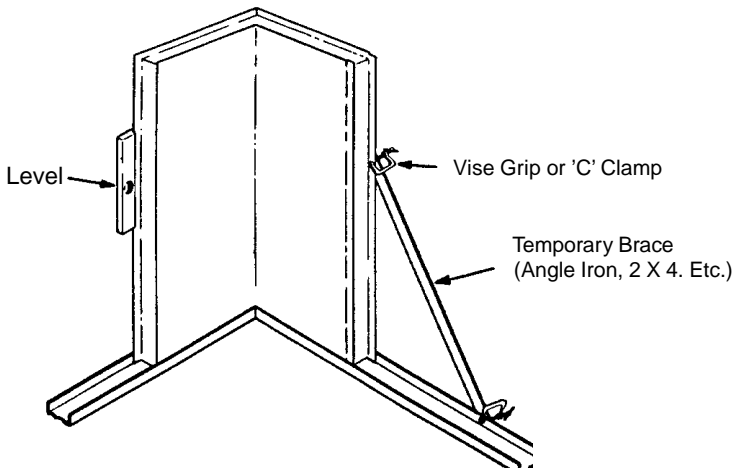
Select next panel to be installed, making sure that strip insulation is in place. Stand the panel in the floor channel; tip the top edge of the panel back at the same time that the bottom edge is properly inserted into the adjacent paneledge, and then push the top into place. (Caution! Insert strip insulation into the top edges of the panels.)

## Door Installation

Two types of doors are available:

*Type I:* During installation of panels, openings are left in the wall to which individual side jambs, top and bottom jambs and the door itself are installed.

*Type II:* The vertical jambs, as well as the top and bottom jambs, are plant welded into one unit to which the door and hardware are also plant assembled. This construction requires that the door unit (including the door) be set progressively along with the panels.



# DOORS AND SPECIAL ACCESSORIES

Eagle single and double entry doors are available in any size and type. They can be fabricated of cold rolled, stainless, aluminum material or to your specifications.

## OTHER CAPABILITIES

CABINET AND CUSTOM SHEET METALWORK

DOORS-INSPECTION

STRUCTURAL COMPONENTS, FRAMES

CABINET

DUCTWORK

MOUNTING FRAMES

CONVEYERS

SPECIAL HARDWARE

## FACILITIES



Eagle completely assembles the oven and furnace panels on site. A computer program maintains the exact cut length of all components. From there the parts are roll formed, slotted with our patented ThermalTrak™, and then secondary formed. The parts are then assembled for delivery.



Roll Forming



Slitting



Secondary Forming



Assembly

The panels are then inspected for any thermal compromises and tested for assembly with each other. Under certain conditions, the panels are mechanically configured for blowers, heat exchangers, and other devices. **Only then are they delivered to the customer.**

## EAGLE PANELS

2500 BROOKPARK RD.

CLEVELAND, OH 44134-1407

216-741-1800 216-741-7153(FAX)

1-800-988-0632

1-877-868-4890(FAX)

**OFFICE**

## EAGLE PANELS

[www.eaglepanels.com](http://www.eaglepanels.com)

[info@eaglepanels.com](mailto:info@eaglepanels.com)